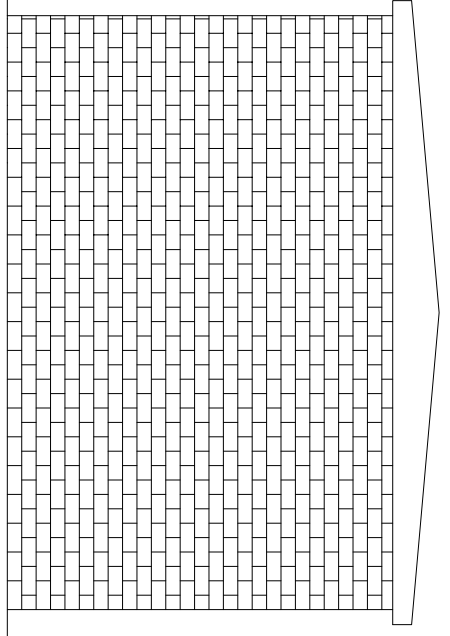
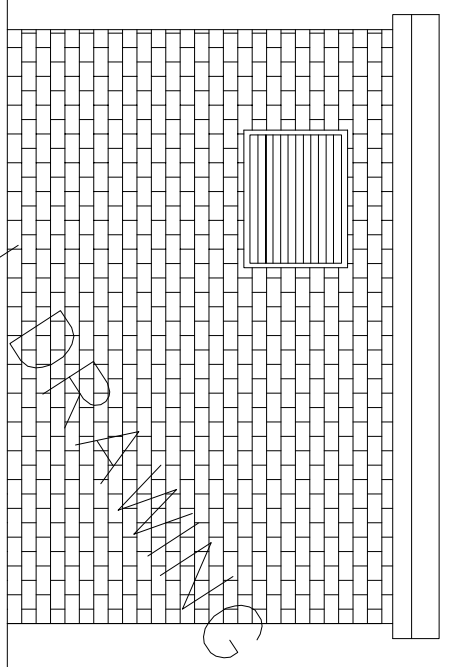


FRONT ELEVATION

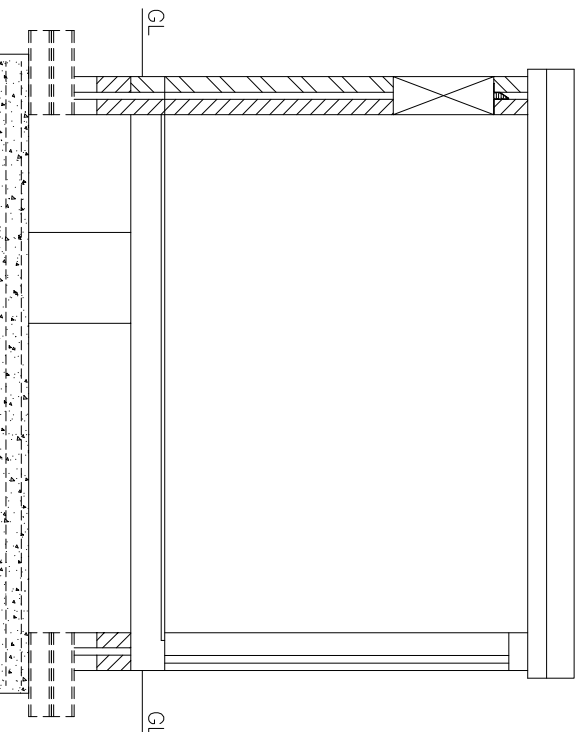
SUBSTATION DOORS TO MEET SPECIFICATION WITH VENTILATION OPENINGS, IN 2590x2400mm HIGH BRICKWORK OPENING



REAR ELEVATION



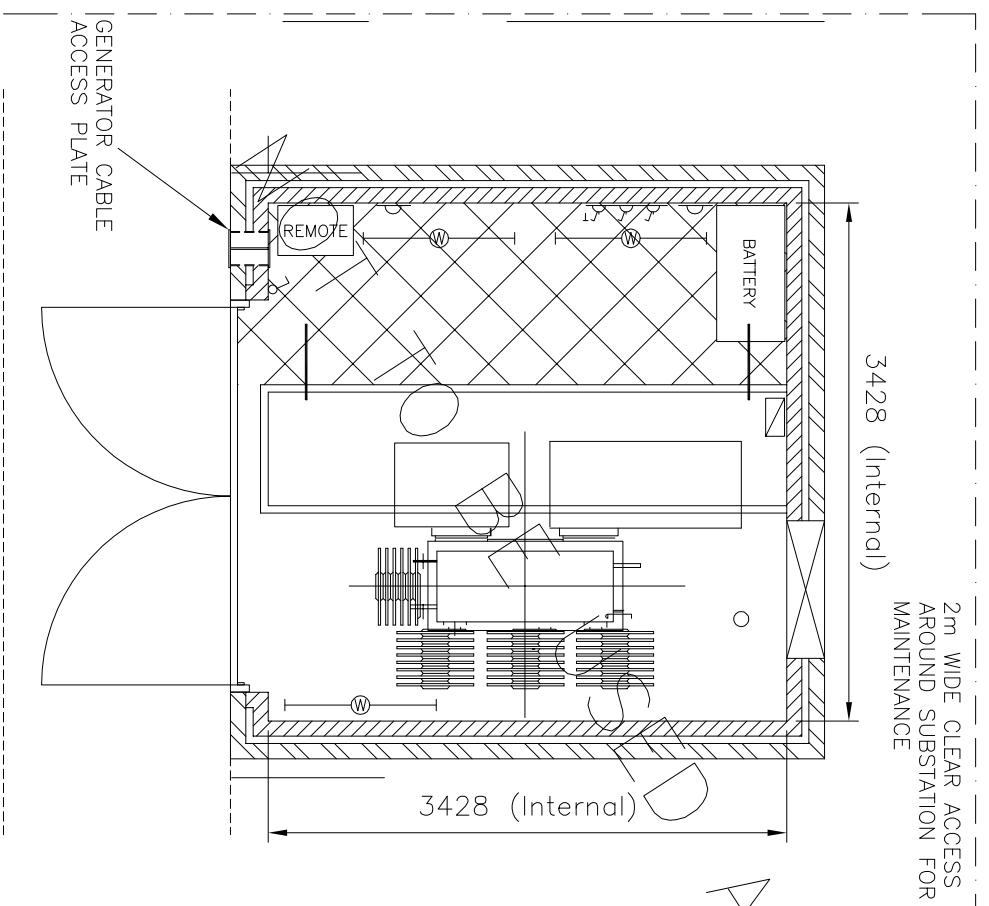
SIDE ELEVATION



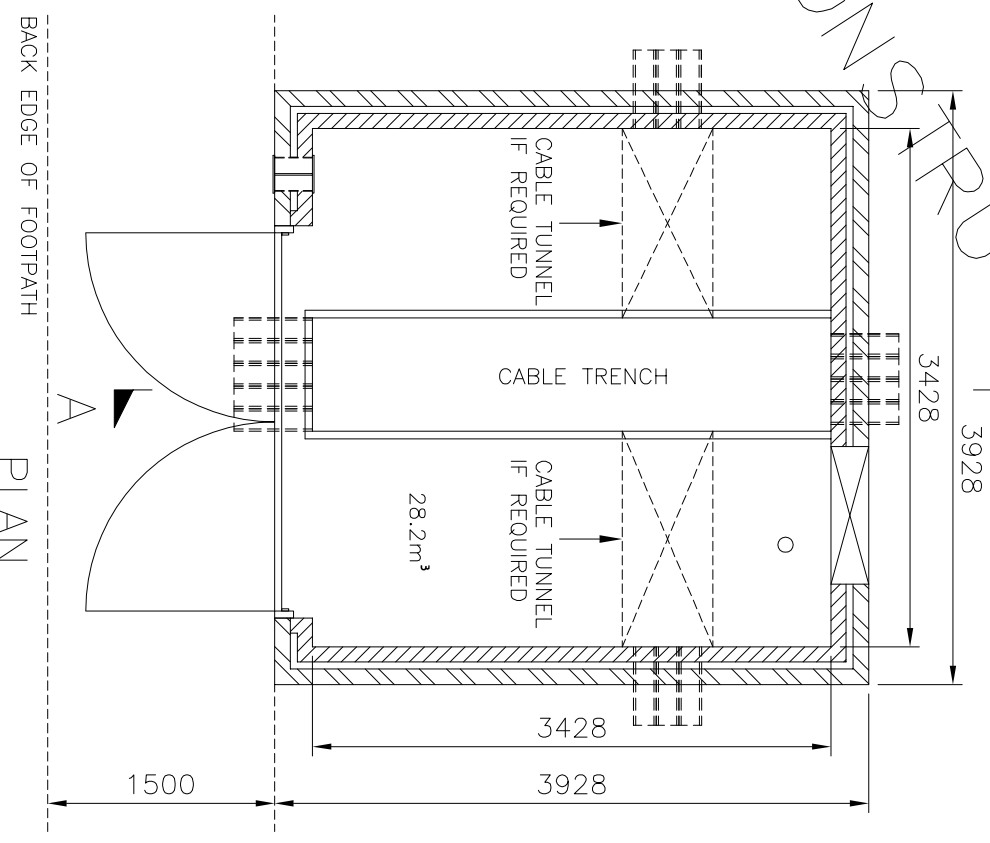
SECTION A-A

NOTES

Substation doors to be set back a minimum of 1500mm from back edge of footpath. Any proposed reduction in this clearance to be approved by Northern Powergrid following submission of site specific risk assessment and operational method statement.



ELECTRICAL LAYOUT



PLAN



Manufacturer Details

Sheet No. 1 Scale AS SHOWN

Prepared By TM

Revised Grid Reference

Date Issued 17.05.16 Checked By JJ

Lloyds Court, 78 Grey Street, Newcastle Upon Tyne, NE1 6AF

315 - 1000kVA SLIDE IN UDE IN MASONRY ENCLOSURE

Document Details GENERAL ARRANGEMENT / PLAN & ELEVATIONS

Ref No. C993899 Historic Drawing No.

Revision B Notes